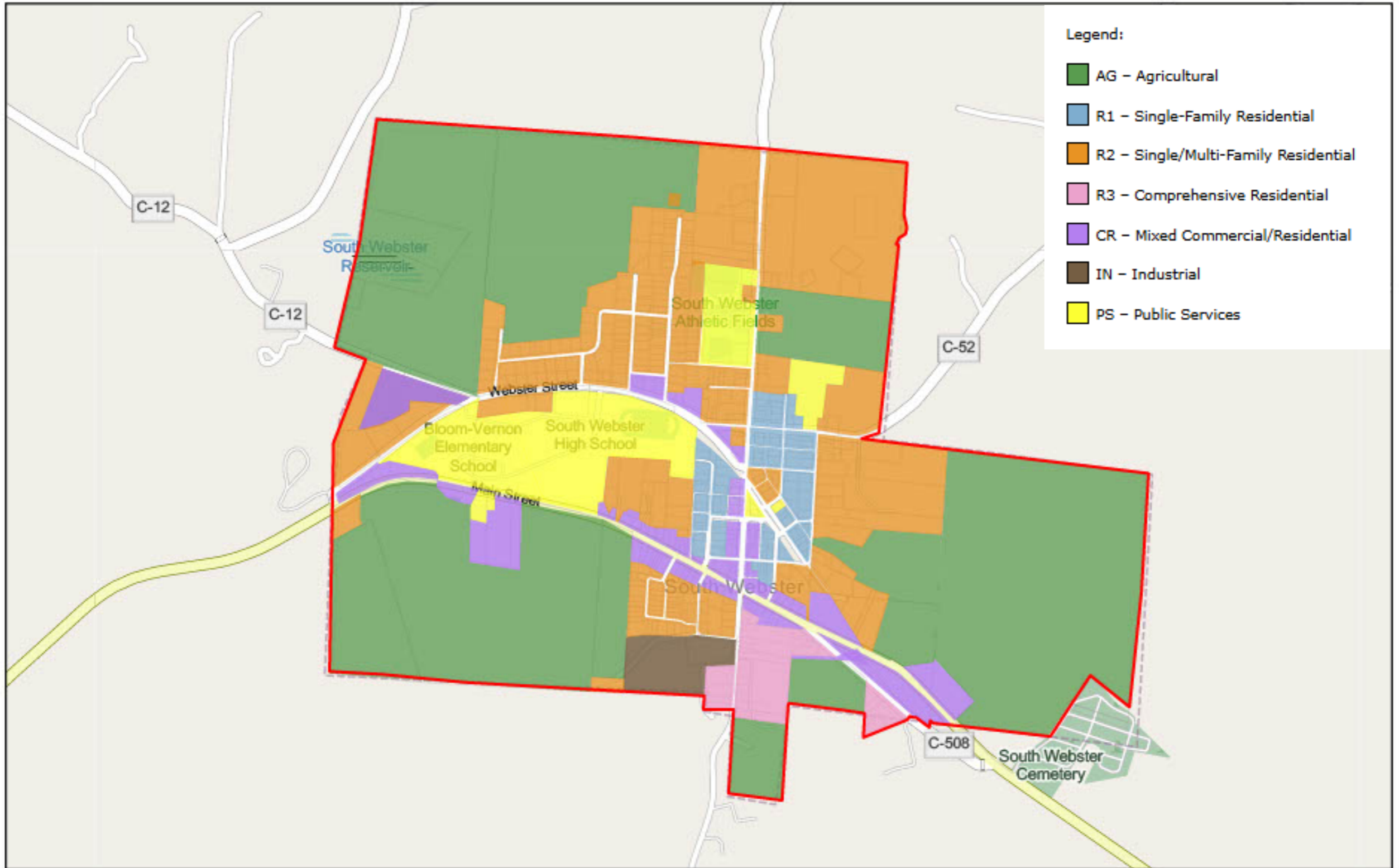


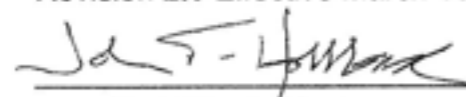
# South Webster Zoning Districts



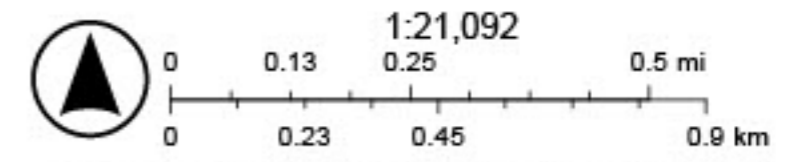
- Legend:
- AG - Agricultural
  - R1 - Single-Family Residential
  - R2 - Single/Multi-Family Residential
  - R3 - Comprehensive Residential
  - CR - Mixed Commercial/Residential
  - IN - Industrial
  - PS - Public Services

1/3/2025

Official Zoning Map of the Village of South Webster  
Revision 2.0 Effective March 10, 2025



John T. Hollback, Mayor



Map data © OpenStreetMap contributors, Microsoft, Facebook, Inc. and its affiliates, Esri Community Maps contributors, Map layer by Esri

Village of South Webster Planning Commission