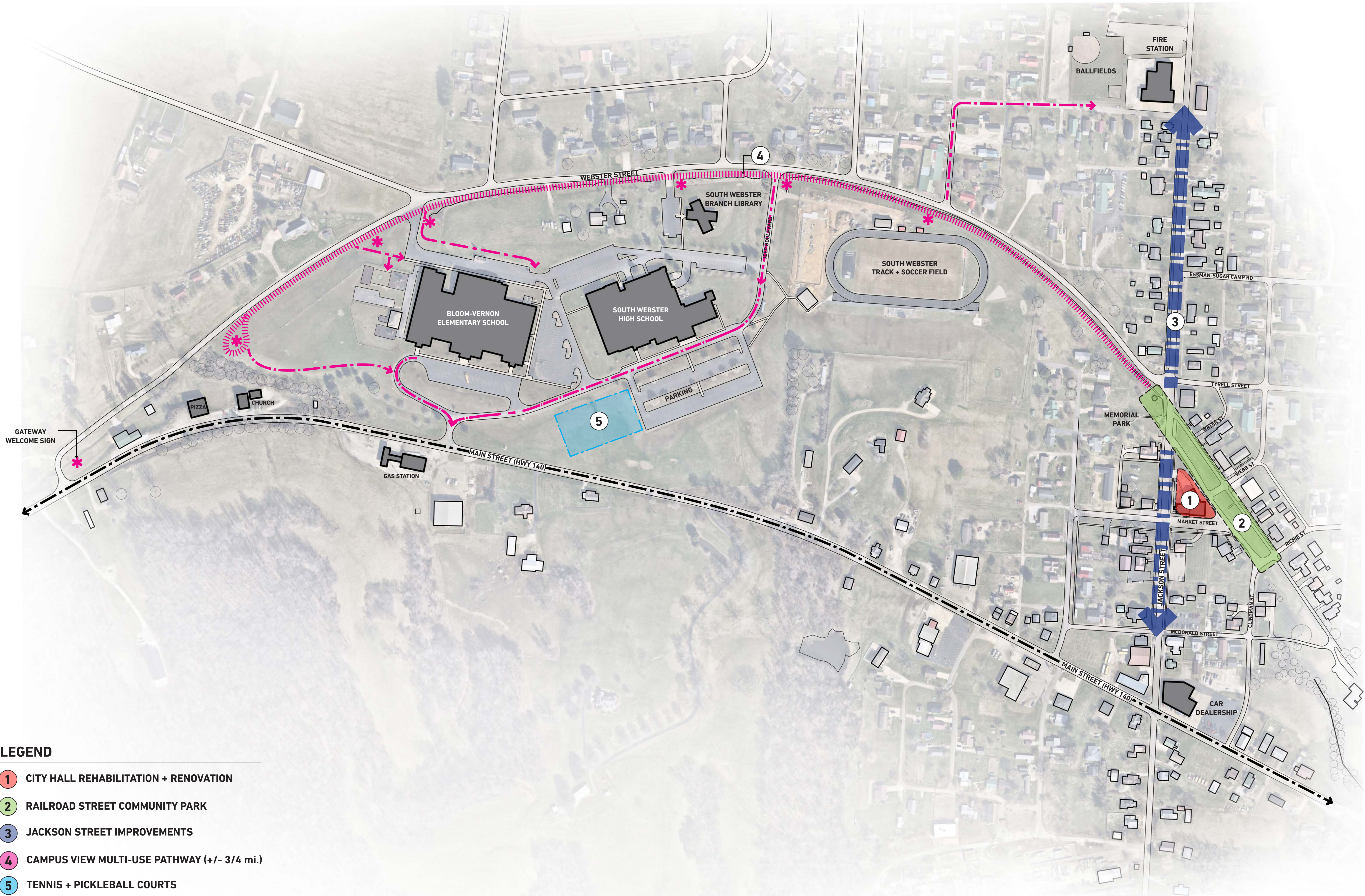




# APPALACHIAN COMMUNITY GRANT PROGRAM

## SOUTH WEBSTER, OHIO



**LEGEND**

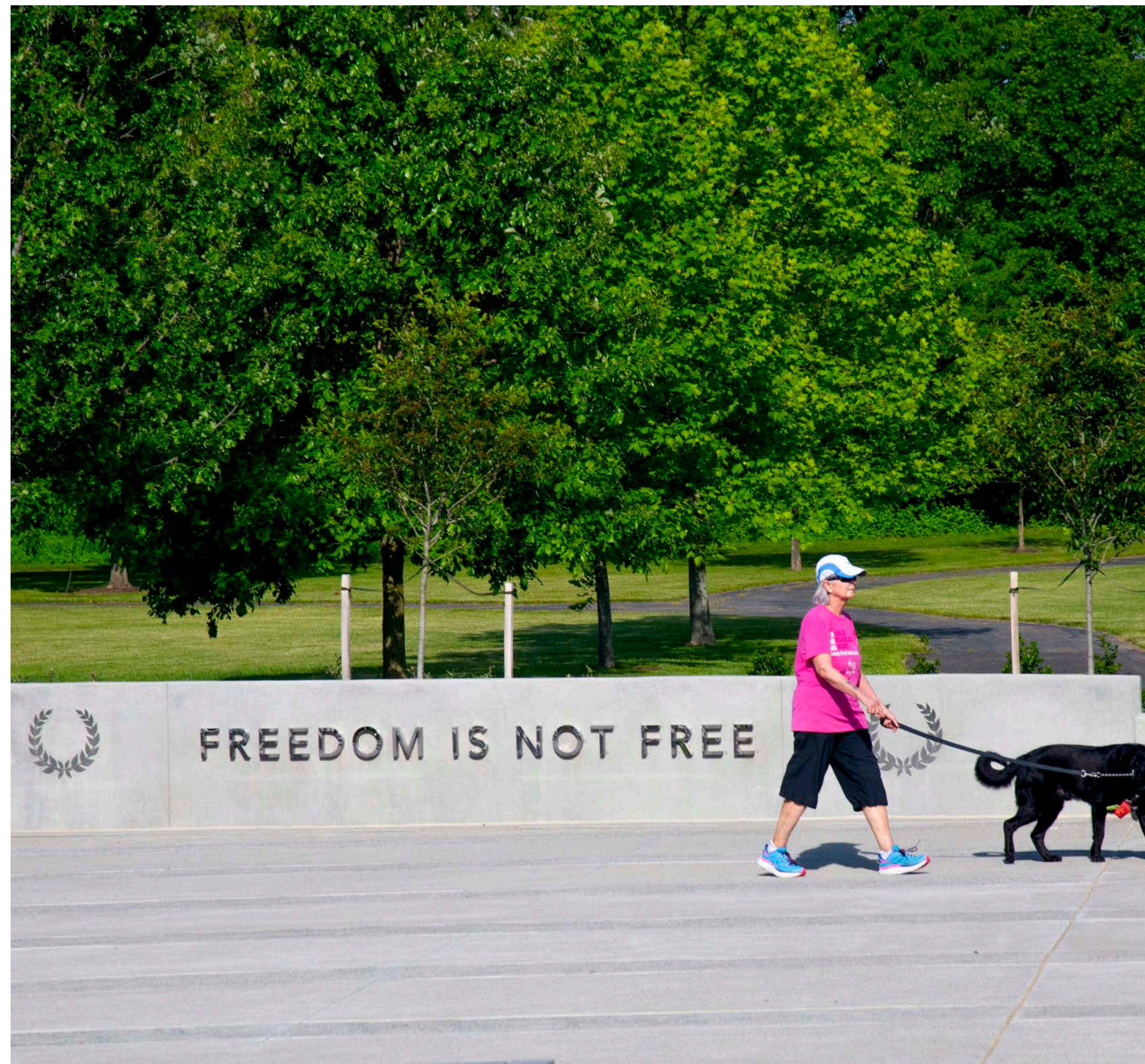
- 1 CITY HALL REHABILITATION + RENOVATION
- 2 RAILROAD STREET COMMUNITY PARK
- 3 JACKSON STREET IMPROVEMENTS
- 4 CAMPUS VIEW MULTI-USE PATHWAY (+/- 3/4 mi.)
- 5 TENNIS + PICKLEBALL COURTS

0' 160' 320'

## 2 RAILROAD STREET COMMUNITY PARK

- Linear park in town center for hosting community events (farmer's markets, holiday tree lighting, etc.)
- Proposed raised performance platform for performances or informal gatherings.
- Close off or remove portion of Clingman Street.
- Simple/clean landscaping improvements that includes shade trees, lawn and bench seating.
- Stormwater/drainage management to mitigate current grading/drainage issues near City Hall Building.





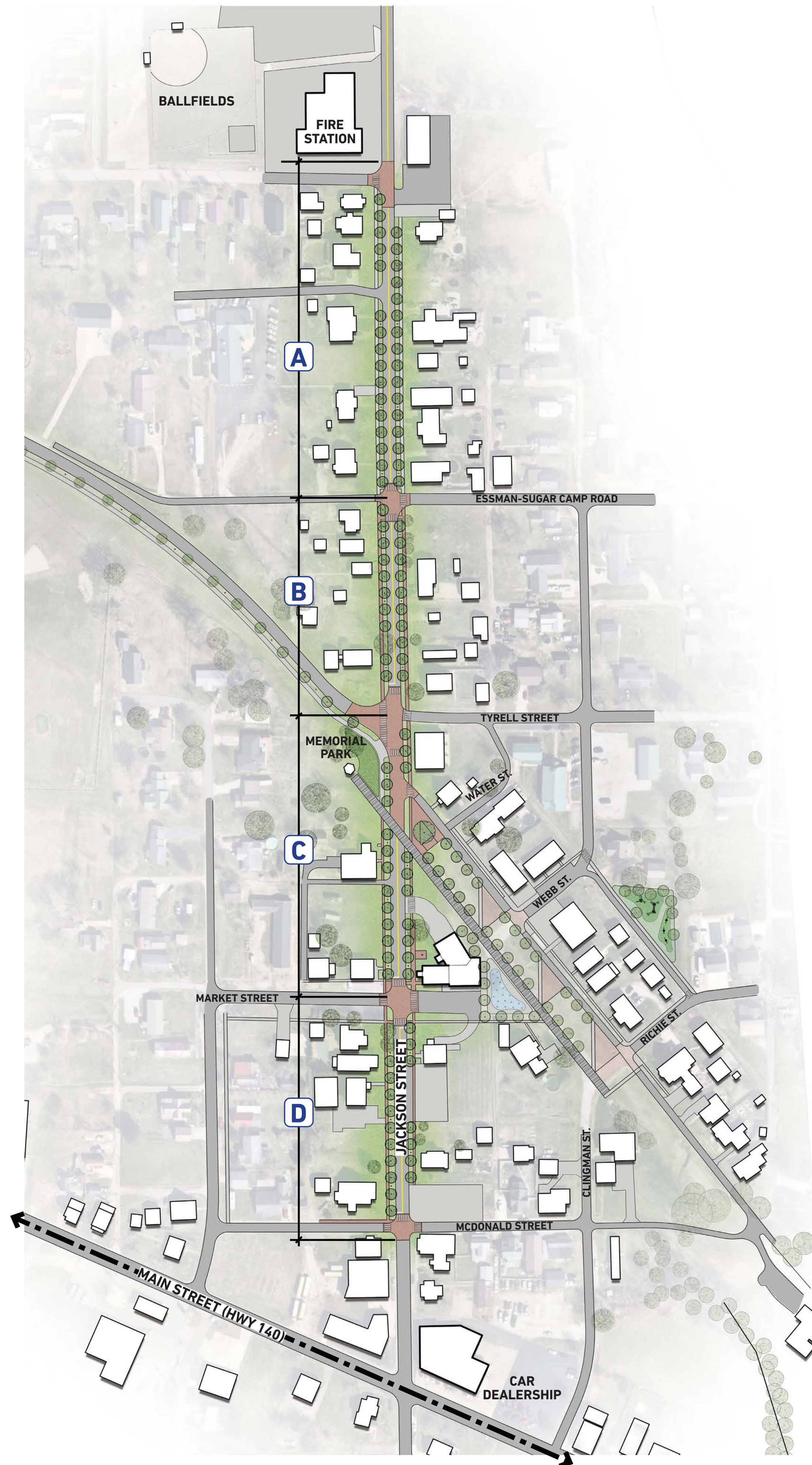
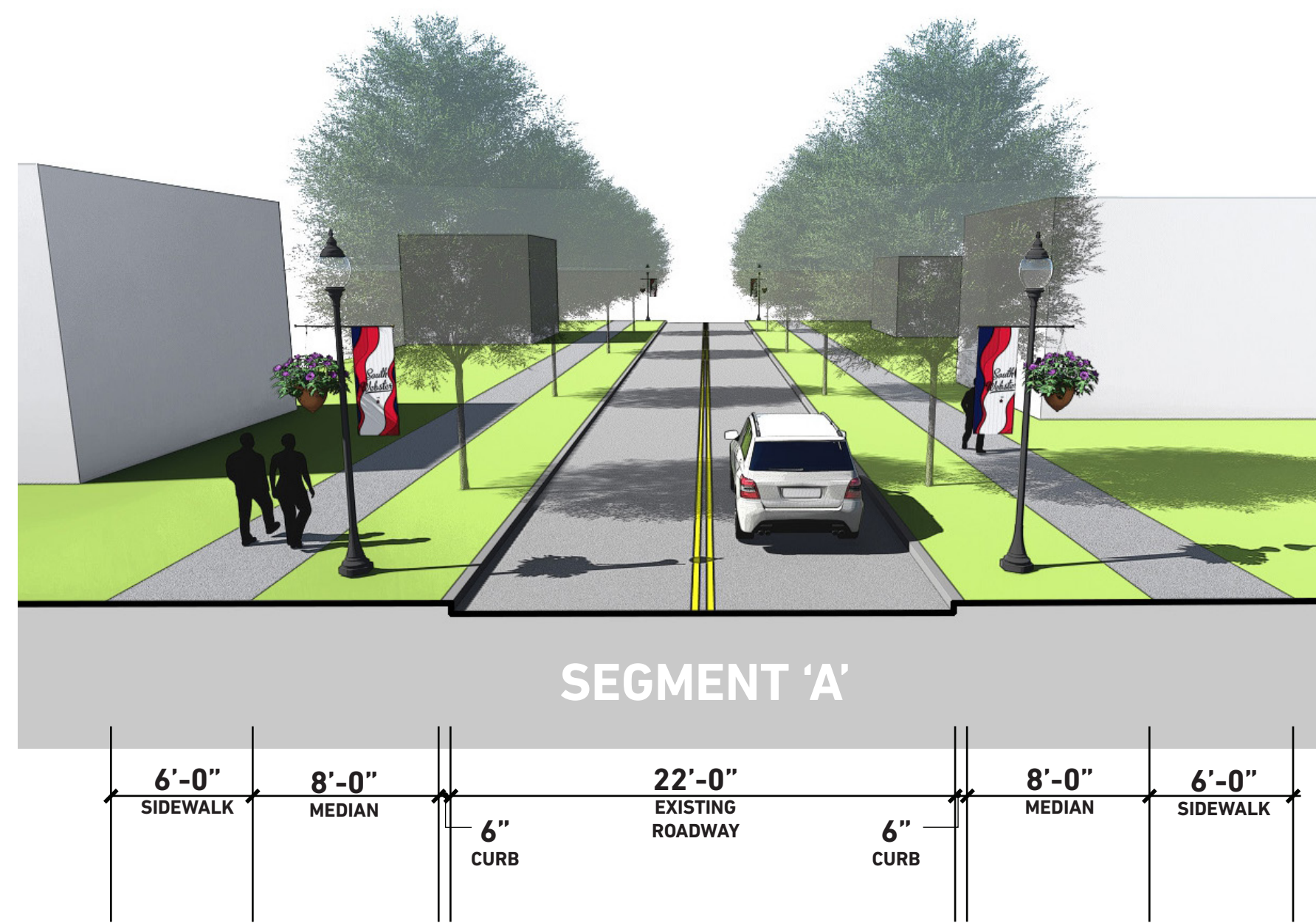
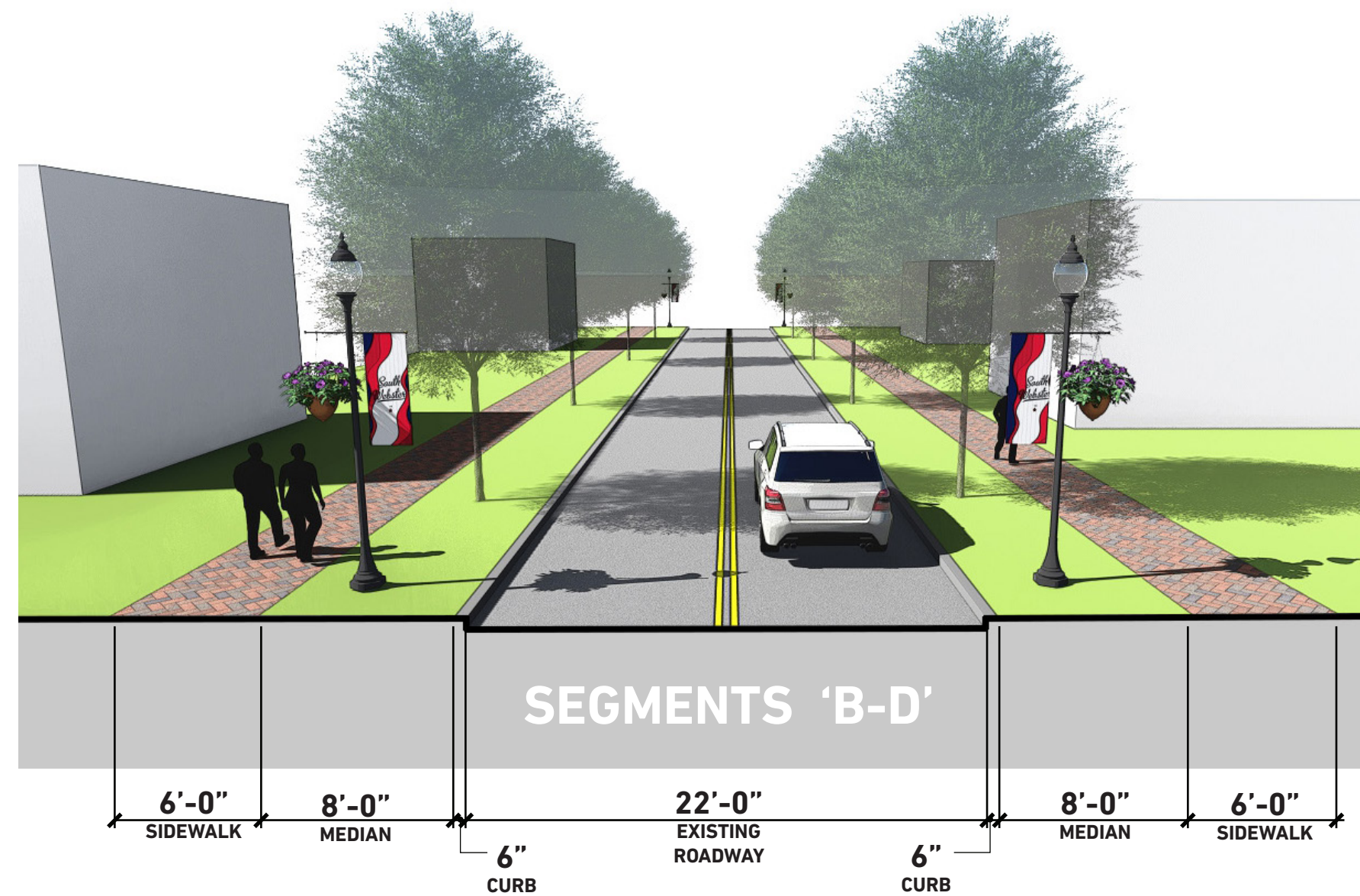
### 3 JACKSON STREET IMPROVEMENTS

- Improvements to both sides of Jackson Street to create a clear town streetscape corridor; may extend from E. Main Street to the new Fire Station, or a portion thereof (see segment breakdown).
- 6'-0" wide brick sidewalks from McDonald Street to Essman-Sugar Camp Road; new concrete sidewalks beyond to Fire Station.
- Brick paver crosswalks at prominent street intersections
- Street trees along both sides of the street at 30' O.C. within the tree lawn
- Decorative Light poles with banners/flowers (see light pole standards at school main entry)

#### Potential Segment Breakdown

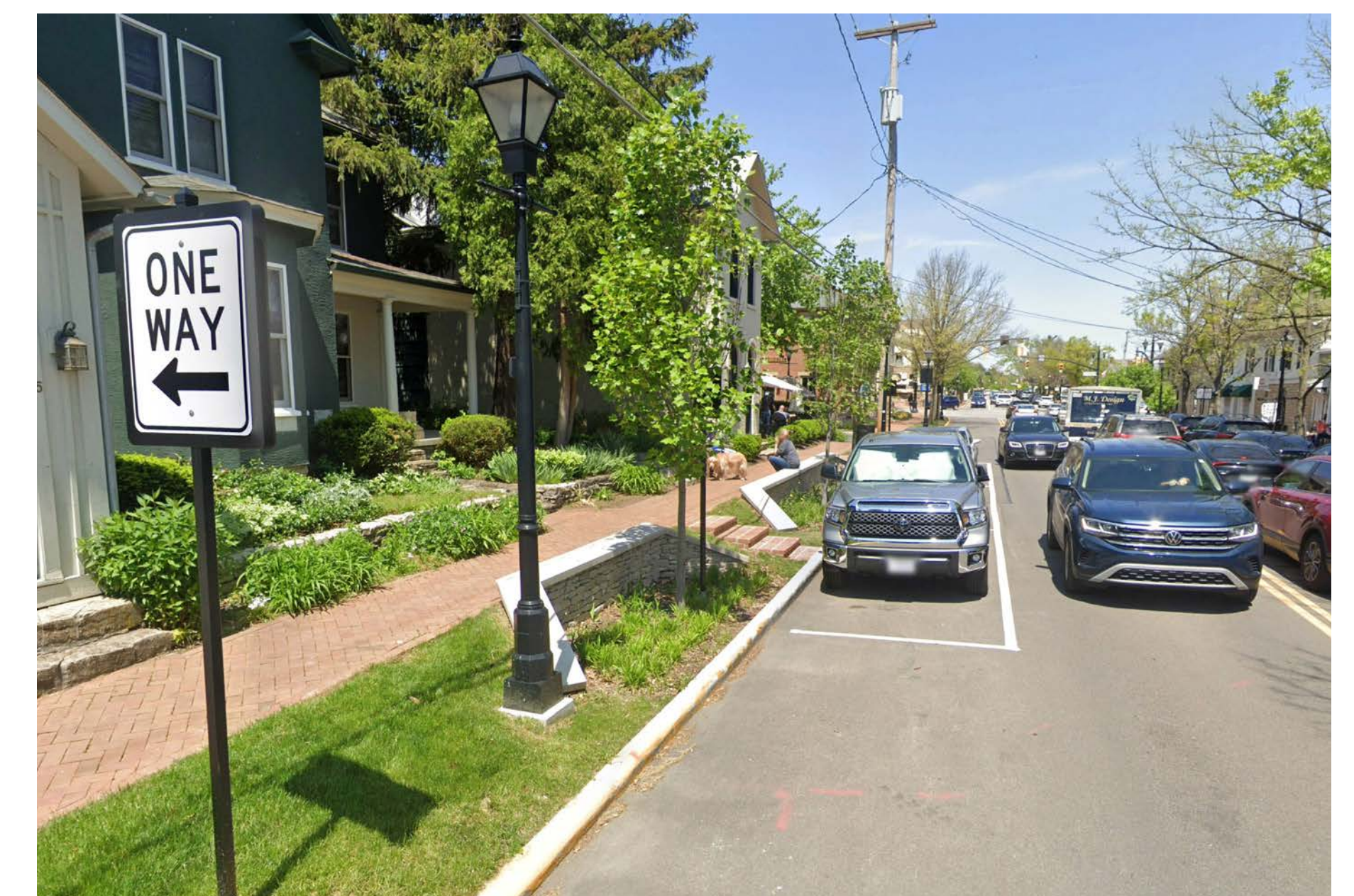
**A** = 600 FT. (0.12 mi.)

**B - D** = 1,350 FT. (0.25 mi.)

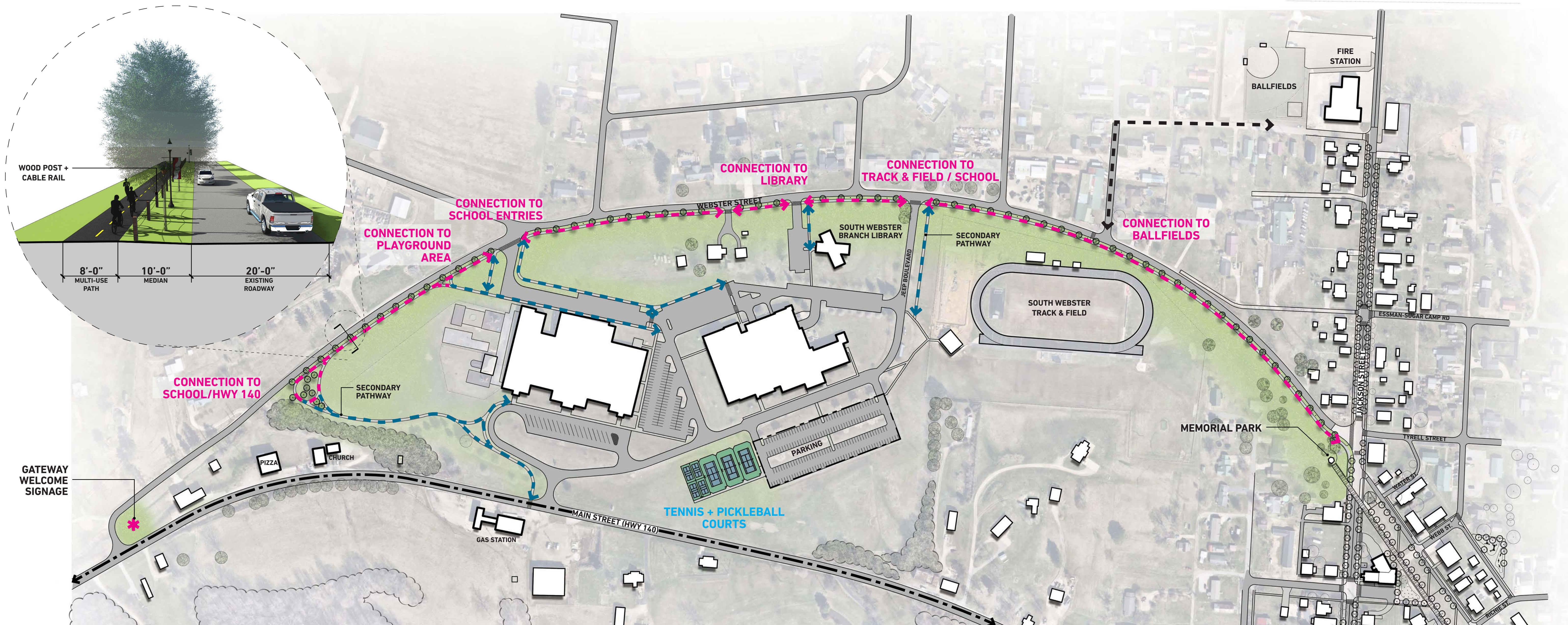


### JACKSON STREET IMPROVEMENTS DIAGRAM

Appalachian Community Grant Program

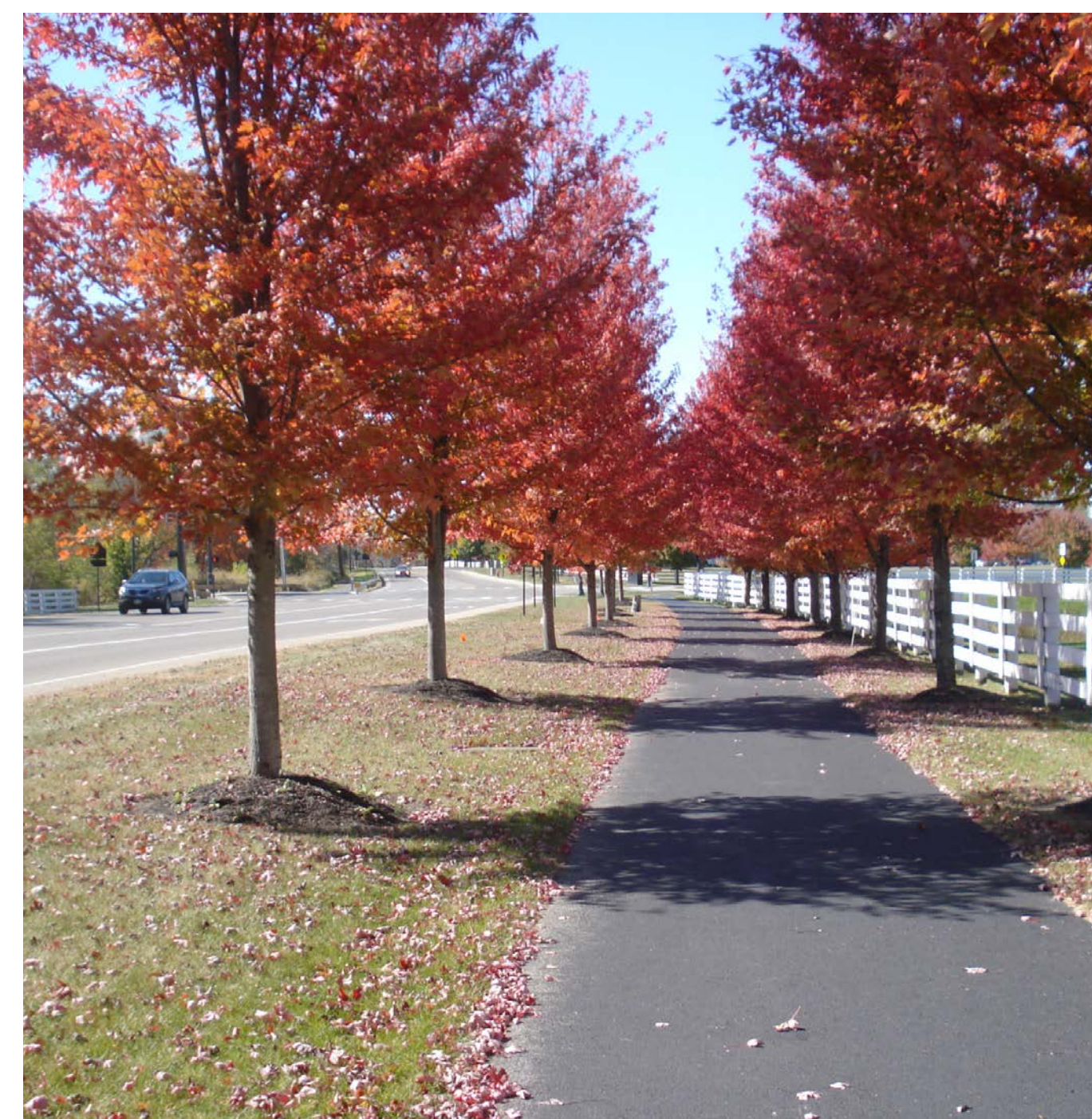


0' | 200' | 400'



#### 4 CAMPUS VIEW BIKE / WALKING PATHWAY (+/- 3/4 mi.)

- Additions / improvements to existing bike trail along Webster Street extending from Jackson Street to west side of school campus connecting town center to pinnacle locations throughout South Webster
- Provide key connections to school and community
- 8'-0" wide grass asphalt multi-use path with painted traffic striping, and 6'-0" wide secondary gravel pathway connections.
- 10'-0" wide grass median with deciduous shade trees spaced 60'-0" O.C.
- Traditional style 14'-0" tall decorative post-top lights (+/- 120'-0" O.C.) for security purposes.
- Median to also include protective guardrail (42" ht. square wood post with 3-rail wire cabling)
- Painted crosswalks and ADA ramps with detectable warnings at various entry/driveway crossings.
- Proposed gateway welcome sign at west entry into town along Highway 140; includes masonry piers and signage element



#### 5 TENNIS + PICKLEBALL COURTS

- (3) Full size tennis and (4) pickleball courts including:
  - 10' high black vinyl fencing + gates
  - Premium painted court surfacing
  - Post/net equipment
  - Sidewalk access from adjacent parking lot



10' | 160' | 320'